



HVAC Products

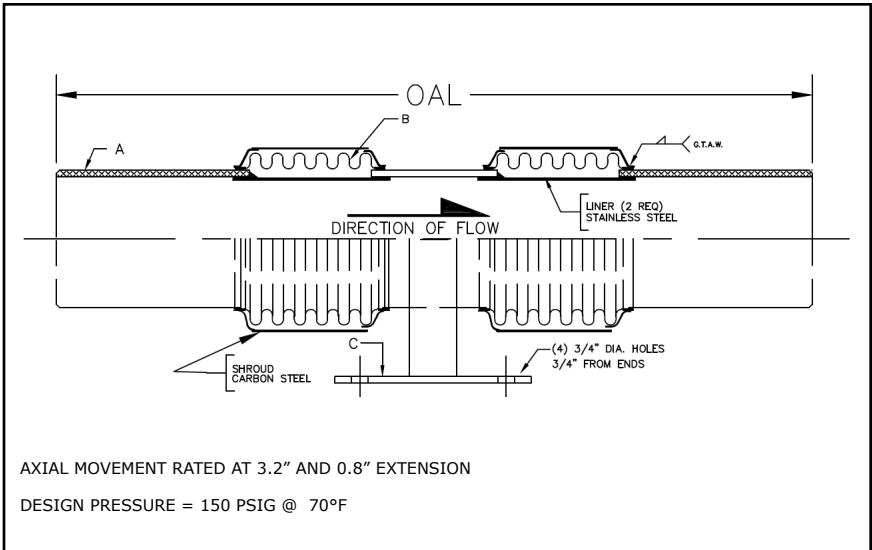
SUBMITTAL

Mar 2018

311 SERIES DUAL EXPANSION JOINT 4" TRAVEL W/WELD ENDS

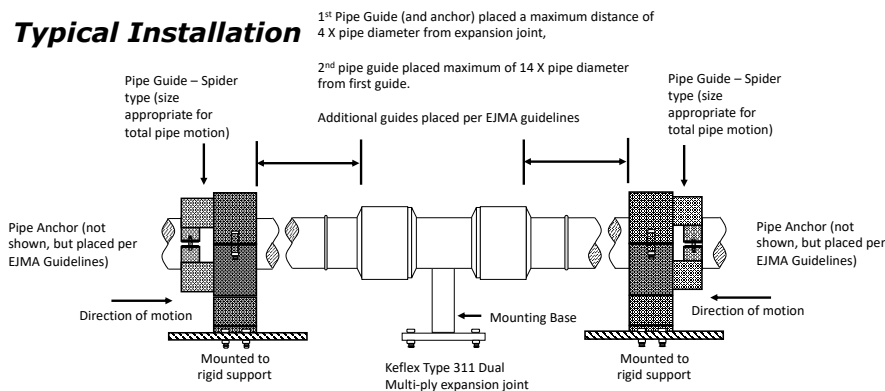
PROJECT:	
CUSTOMER:	
ENGINEER:	
ARCHITECT:	

MATERIALS OF CONSTRUCTION	
'A' PIPE SCH 40:	CARBON STEEL
'B' CAPSULE:	T-304 STN STL
'C' BASE PLATE:	CARBON STEEL
'D' PLATE FLANGES:	CARBON STEEL



QTY	ID # OR TAG #	DIA (IN)	KEFLEX PART #	OAL	AXIAL FORCE TO COMPRESS (LBS)	WEIGHT (LBS)	3D Model (.stp)
		2"	F020M311DB904	31"	175	19	
		2 1/2"	F024M311DB904	31"	350	19	
		3"	F030M311DB904	31"	225	37	
		4"	F040M311DB904	31"	575	52	
		5"	F050M311DB904	31"	350	61	
		6"	F060M311DB904	31"	400	72	
		8"	F080M311DB904	31"	575	91	
		10"	F100M311DB904	31"	850	120	
		12"	F120M311DB904	31"	475	154	

Typical Installation



IMPORTANT LINKS	
BROCHURE:	
INSTALLATION INSTRUCTIONS:	
TECHNICAL DATA:	
WEBSITE:	FLEX-WELD.COM



MADE IN THE USA

1425 LAKE AVE
WOODSTOCK, IL 60098
800-323-6893