



HVAC Products

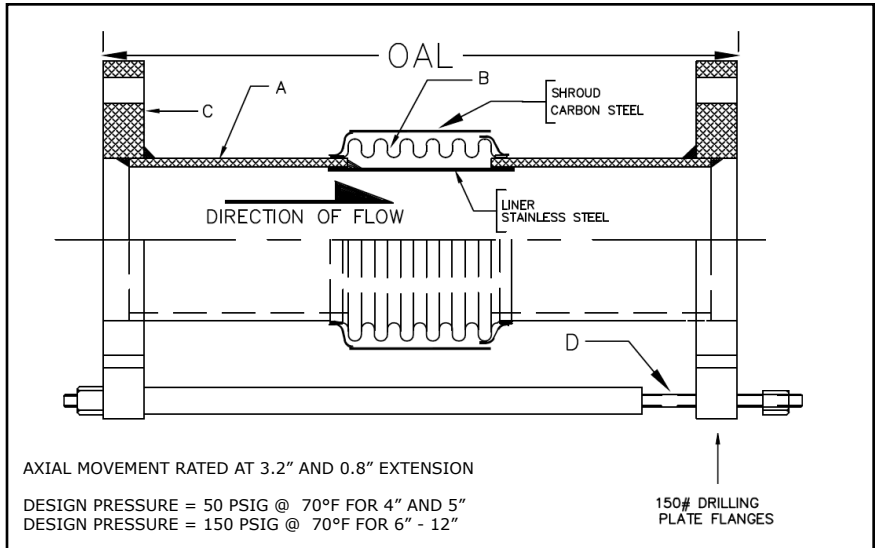
SUBMITTAL

Mar 2018

311 SERIES EXPANSION JOINT 4" TRAVEL W/150# PLATE FLANGES & TIE RODS

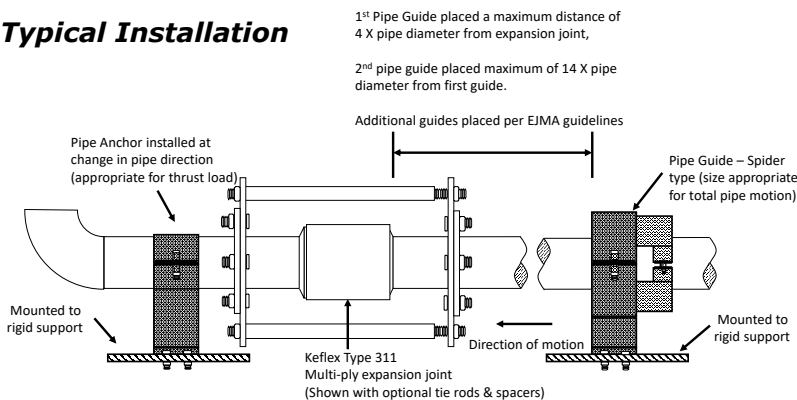
PROJECT:	
CUSTOMER:	
ENGINEER:	
ARCHITECT:	

MATERIALS OF CONSTRUCTION	
'A' PIPE SCH 40:	CARBON STEEL
'B' CAPSULE:	T-304 STN STL
'C' PLATE FLANGE:	CARBON STEEL
'D' TIE RODS/SPACERS	CARBON STEEL



QTY	ID # OR TAG #	DIA (IN)	KEFLEX PART #	OAL	AXIAL FORCE TO COMPRESS (LBS)	WEIGHT (LBS)	3D Model (.stp)
		4"	F040L311T1504	24"	625	56	
		5"	F050L311T1504	24"	425	74	
		6"	F060M311T1504	24"	500	90	
		8"	F080M311T1504	24"	650	131	
		10"	F100M311T1504	24"	900	173	
		12"	F120M311T1504	24"	550	234	

Typical Installation



IMPORTANT LINKS	
BROCHURE:	
INSTALLATION INSTRUCTIONS:	
TECHNICAL DATA:	
WEBSITE:	FLEX-WELD.COM

MADE IN THE USA

**1425 LAKE AVE
 WOODSTOCK, IL 60098
 800-323-6893**